

Improving Visitor Infrastructure at Grandtully

Stuart Smith

The site pre 1965:

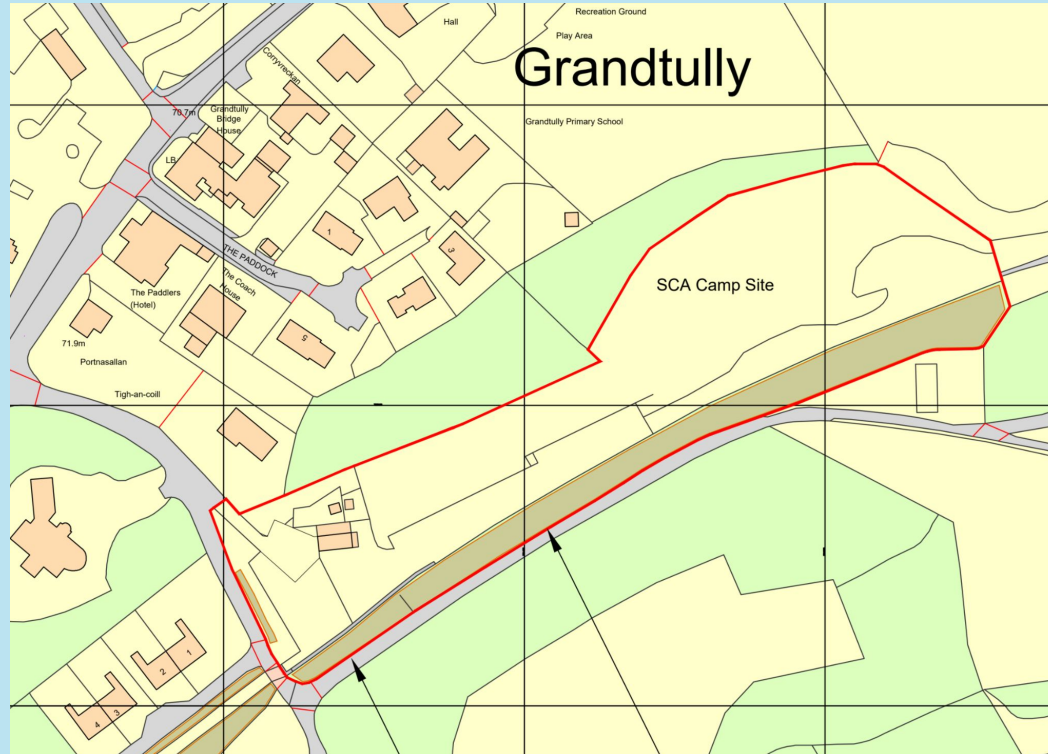


The site now:



The location:

- Rob Roy Way
- River Tay Way
- Walking/running
- Road cycling
- Mountain biking
- Paddlesport
- Local businesses



The initial need:

- Parking for residents, community groups & visitors
- Public Toilets
- Campervan Service Point



Consultation:



- Community groups
- Residents
- Community Councils
- Elected representatives
- Local Authority
- Outdoor recreation organisations
 - Paths For All
 - Ramblers
- Sports Governing Bodies
 - Scottish Cycling
 - Developing Mountain Biking in Scotland
 - Scottish Disability Sport
- Perthshire e-bike Partnership
- Local businesses
- Tourism groups
- Local activity providers

The current project:



Parking for residents, community groups & visitors

Gender Neutral, Accessible Public Toilets

Campervan Service Point

Accessible Parking

Information point

Accessible Changing

Accessible Showers

Changing Places facility

EV charging

E-bike charging

Bike shelter

Secure bike storage & maintenance point

Additional overnight facilities

Drying room

Classroom

Prototyping in 2021:

NatureScot funding:

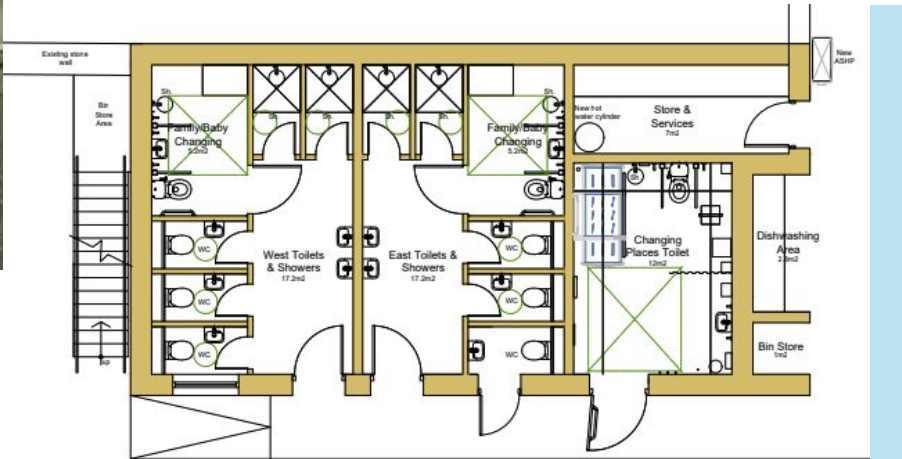
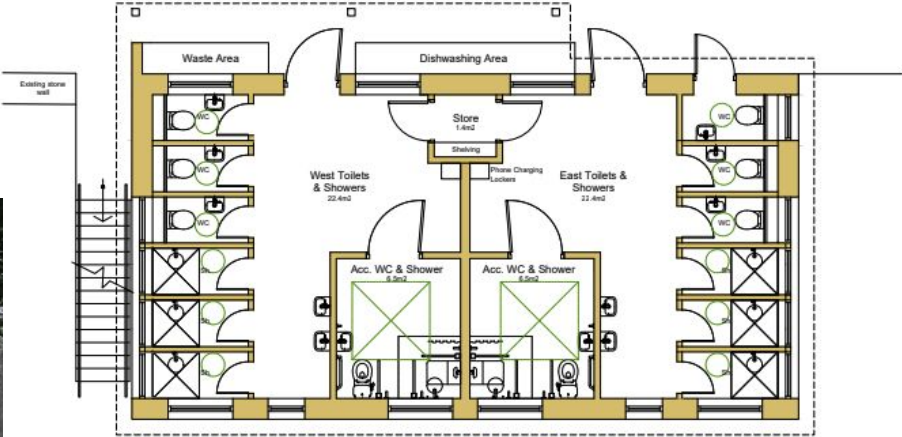
- Public parking
- Public toilets
- Visitor Rangers
- Campervan Service Point



Design:



One of three buildings



Planning:

Current project stage:

- Applying for Building Warrant
- Going out to tender
- Planning for building works this winter

Challenges:

- Rising costs
- Availability of contractors